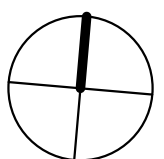


ARQUITECTONICA

2900 Oak Avenue Miami, Florida 33133
305.372.1812 TEL 305.372.1175 FAX
www.arquitectonica.com

ALL DESIGNS INDICATED IN THESE DRAWINGS ARE PROPERTY OF ARQUITECTONICA INTERNATIONAL CORP. NO COPIES, TRANSMISSIONS, REPRODUCTIONS OR ELECTRONIC MANIPULATION OF ANY PORTION OF THESE DRAWINGS IN THE WHOLE OR IN PART ARE TO BE MADE WITHOUT THE EXPRESS WRITTEN AUTHORIZATION OF ARQUITECTONICA INTERNATIONAL CORP. DESIGN INTENT SHOWN IS SUBJECT TO REVIEW AND APPROVAL OF ALL APPLICABLE LOCAL AND GOVERNMENTAL AUTHORITIES HAVING JURISDICTION. ALL COPYRIGHTS RESERVED © 2019. THE DATA INCLUDED IN THIS STUDY IS CONCEPTUAL IN NATURE AND WILL CONTINUE TO BE MODIFIED THROUGHOUT THE COURSE OF THE PROJECTS DEVELOPMENT WITH THE EVENTUAL INTEGRATION OF STRUCTURAL, MEP AND LIFE SAFETY SYSTEMS. AS THESE ARE FURTHER REFINED, THE NUMBERS WILL BE ADJUSTED ACCORDINGLY.

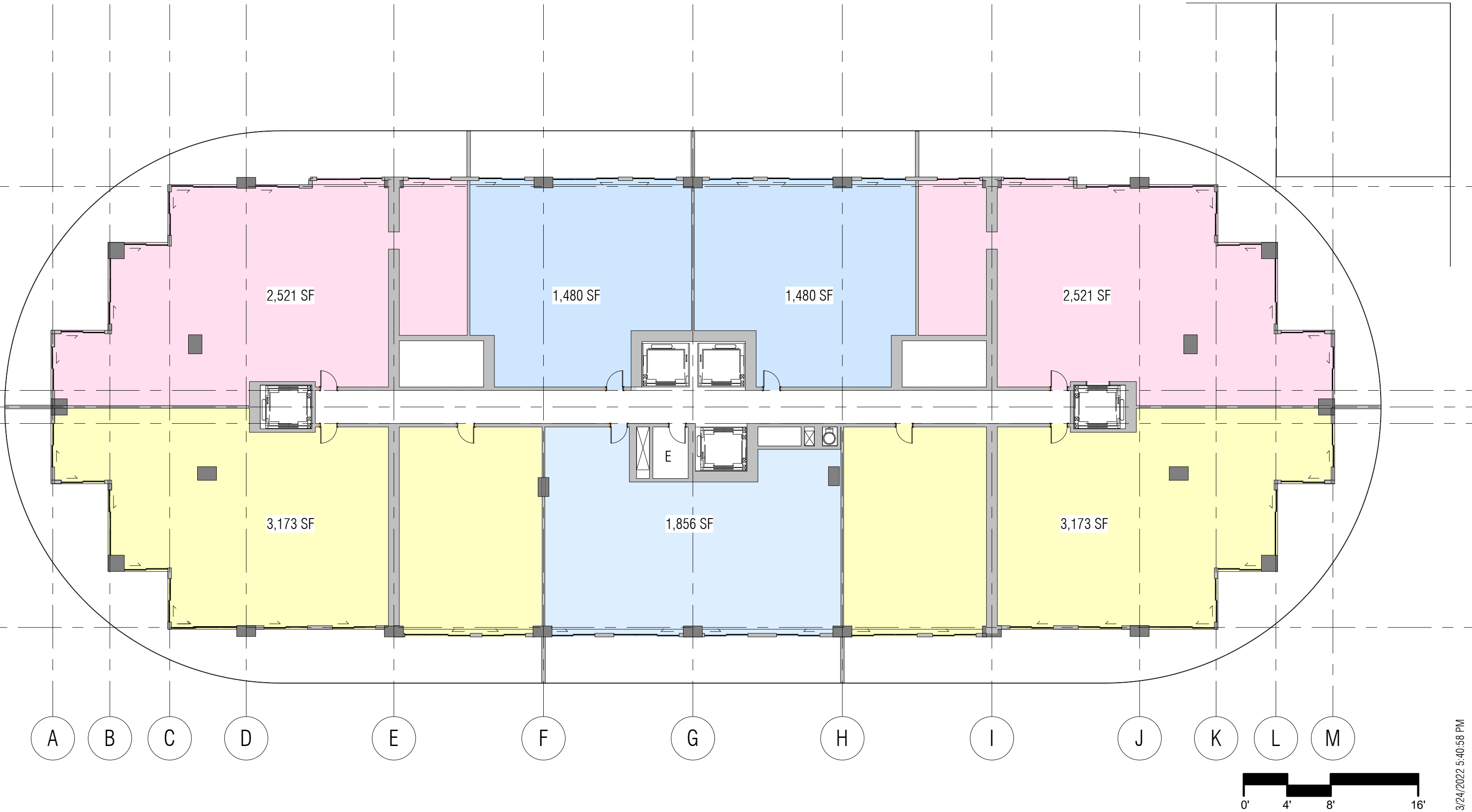


1 PARK TOWER BY TURNBERRY

TYP TOWER LEVEL
SCALE: 1/16" = 1'-0"

DATE:
03/17/22

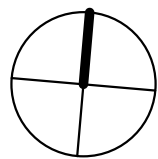
A-102



ARQUITECTONICA

2900 Oak Avenue Miami, Florida 33133
305.372.1812 TEL 305.372.1175 FAX
www.arquitectonica.com

ALL DESIGNS INDICATED IN THESE DRAWINGS ARE PROPERTY OF ARQUITECTONICA INTERNATIONAL CORP. NO COPIES, TRANSMISSIONS, REPRODUCTIONS OR ELECTRONIC MANIPULATION OF ANY PORTION OF THESE DRAWINGS IN THE WHOLE OR IN PART ARE TO BE MADE WITHOUT THE EXPRESS WRITTEN AUTHORIZATION OF ARQUITECTONICA INTERNATIONAL CORP. DESIGN INTENT SHOWN IS SUBJECT TO REVIEW AND APPROVAL OF ALL APPLICABLE LOCAL AND GOVERNMENTAL AUTHORITIES HAVING JURISDICTION. ALL COPYRIGHTS RESERVED © 2019. THE DATA INCLUDED IN THIS STUDY IS CONCEPTUAL IN NATURE AND WILL CONTINUE TO BE MODIFIED THROUGHOUT THE COURSE OF THE PROJECTS DEVELOPMENT WITH THE EVENTUAL INTEGRATION OF STRUCTURAL, MEP AND LIFE SAFETY SYSTEMS. AS THESE ARE FURTHER REFINED, THE NUMBERS WILL BE ADJUSTED ACCORDINGLY.



1 PARK TOWER BY TURNBERRY

TYP TOWER PH LEVEL
SCALE: 1/16" = 1'-0"

DATE:
03/18/22

A-103

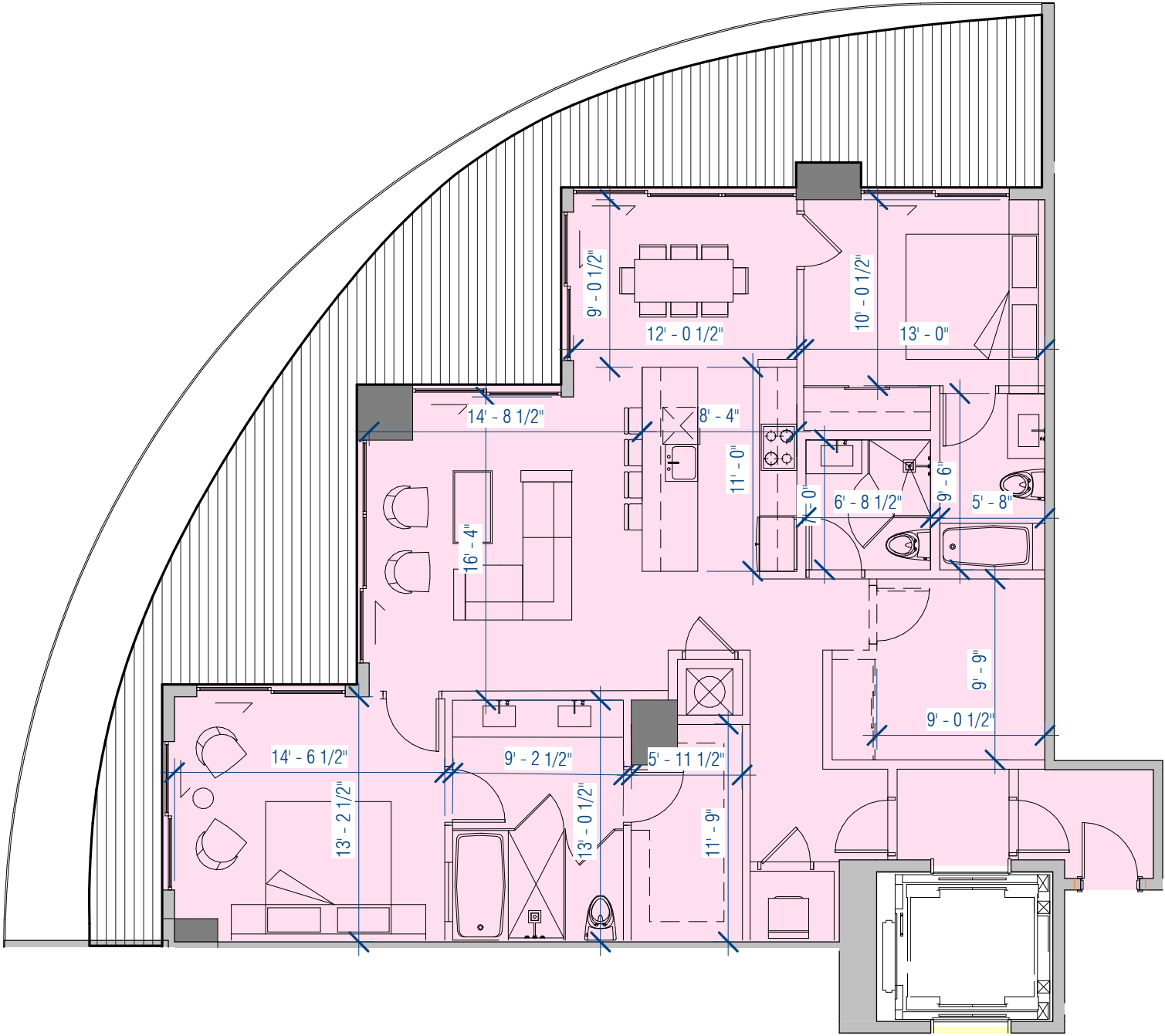
UNIT A - 6 & 11 Line

2 Bedrooms | Den | 3 Bathrooms

INTERIOR: 1,575 SF

BALCONY: 700 SF

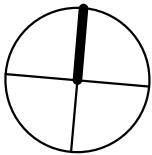
TOTAL : 2,252 SF



ARQUITECTONICA

2900 Oak Avenue Miami, Florida 33133
305.372.1812 TEL 305.372.1175 FAX
www.arquitectonica.com

ALL DESIGNS INDICATED IN THESE DRAWINGS ARE PROPERTY OF ARQUITECTONICA INTERNATIONAL CORP. NO COPIES, TRANSMISSIONS, REPRODUCTIONS OR ELECTRONIC MANIPULATION OF ANY PORTION OF THESE DRAWINGS IN THE WHOLE OR IN PART ARE TO BE MADE WITHOUT THE EXPRESS WRITTEN AUTHORIZATION OF ARQUITECTONICA INTERNATIONAL CORP. DESIGN INTENT SHOWN IS SUBJECT TO REVIEW AND APPROVAL OF ALL APPLICABLE LOCAL AND GOVERNMENTAL AUTHORITIES HAVING JURISDICTION. ALL COPYRIGHTS RESERVED © 2019. THE DATA INCLUDED IN THIS STUDY IS CONCEPTUAL IN NATURE AND WILL CONTINUE TO BE MODIFIED THROUGHOUT THE COURSE OF THE PROJECTS DEVELOPMENT WITH THE EVENTUAL INTEGRATION OF STRUCTURAL, MEP AND LIFE SAFETY SYSTEMS. AS THESE ARE FURTHER REFINED, THE NUMBERS WILL BE ADJUSTED ACCORDINGLY.



1 PARK TOWER BY
TURNBERRY

Unit A
SCALE: 1/8" = 1'-0"

DATE:
03/17/22

A-501

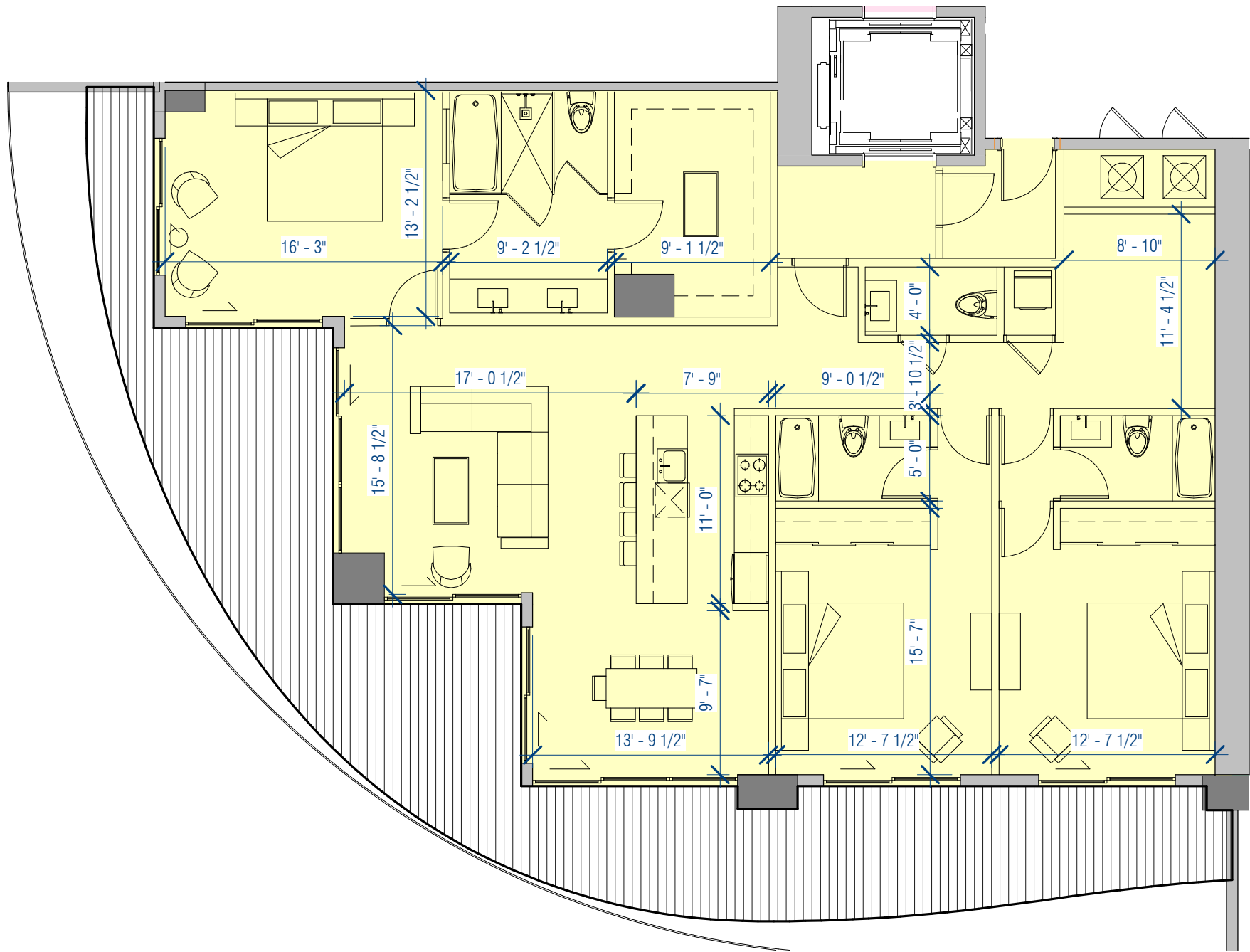
UNIT B - 5 & 1 Line

3 Bedrooms | Den | 4 Bathrooms

INTERIOR: 2,134 SF

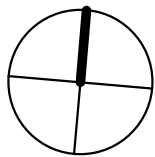
BALCONY: 677 SF

TOTAL: 2,767 SF



ARQUITECTONICA

2900 Oak Avenue Miami, Florida 33133
305.372.1812 TEL 305.372.1175 FAX
www.arquitectonica.com



1 PARK TOWER BY
TURNBERRY

Unit B
SCALE: 1/8" = 1'-0"

DATE:
03/18/22

A-502

ALL DESIGNS INDICATED IN THESE DRAWINGS ARE PROPERTY OF ARQUITECTONICA INTERNATIONAL CORP. NO COPIES, TRANSMISSIONS, REPRODUCTIONS OR ELECTRONIC MANIPULATION OF ANY PORTION OF THESE DRAWINGS IN THE WHOLE OR IN PART ARE TO BE MADE WITHOUT THE EXPRESS WRITTEN AUTHORIZATION OF ARQUITECTONICA INTERNATIONAL CORP. DESIGN INTENT SHOWN IS SUBJECT TO REVIEW AND APPROVAL OF ALL APPLICABLE LOCAL AND GOVERNMENTAL AUTHORITIES HAVING JURISDICTION. ALL COPYRIGHTS RESERVED © 2019. THE DATA INCLUDED IN THIS STUDY IS CONCEPTUAL IN NATURE AND WILL CONTINUE TO BE MODIFIED THROUGHOUT THE COURSE OF THE PROJECTS DEVELOPMENT WITH THE EVENTUAL INTEGRATION OF STRUCTURAL, MEP AND LIFE SAFETY SYSTEMS. AS THESE ARE FURTHER REFINED, THE NUMBERS WILL BE ADJUSTED ACCORDINGLY.

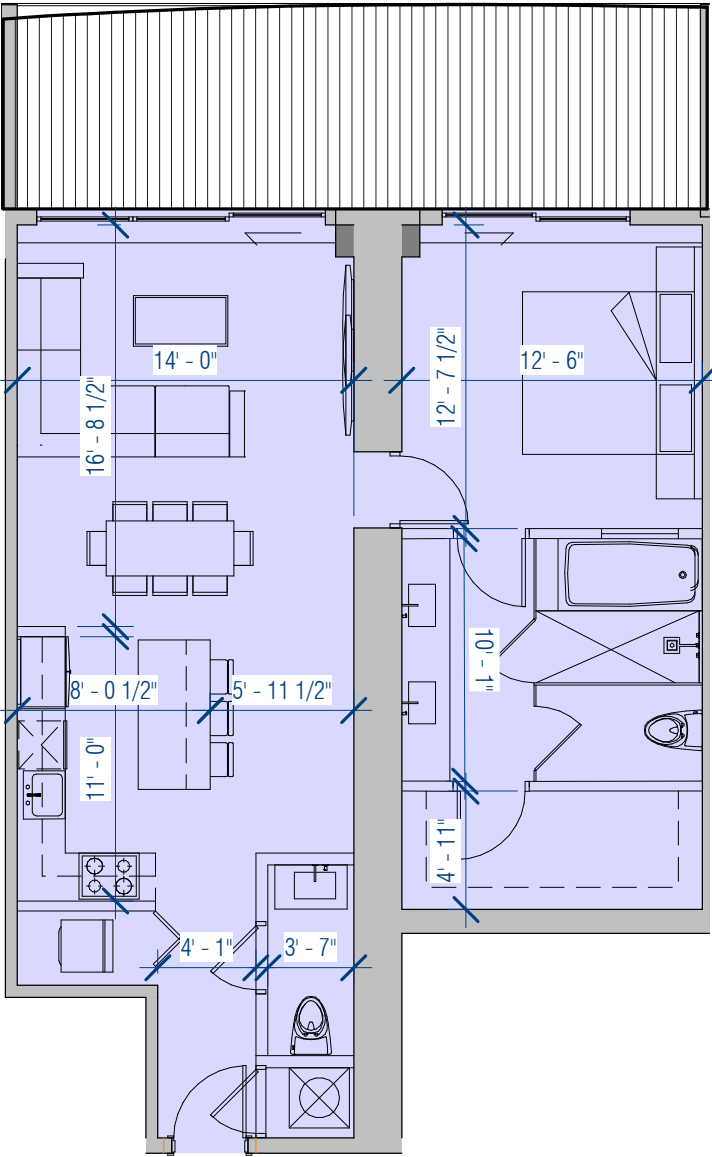
UNIT C - 7 & 10 Line

1 Bedroom | 1.5 Bathrooms

INTERIOR: 967 SF

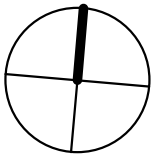
BALCONY: 245 SF

TOTAL: 1,212 SF



ARQUITECTONICA

2900 Oak Avenue Miami, Florida 33133
305.372.1812 TEL 305.372.1175 FAX
www.arquitectonica.com



1 PARK TOWER BY
TURNBERRY

Unit C
SCALE: 1/8" = 1'-0"

DATE:
03/18/22

A-503

ALL DESIGNS INDICATED IN THESE DRAWINGS ARE PROPERTY OF ARQUITECTONICA INTERNATIONAL CORP. NO COPIES, TRANSMISSIONS, REPRODUCTIONS OR ELECTRONIC MANIPULATION OF ANY PORTION OF THESE DRAWINGS IN THE WHOLE OR IN PART ARE TO BE MADE WITHOUT THE EXPRESS OF WRITTEN AUTHORIZATION OF ARQUITECTONICA INTERNATIONAL CORP. DESIGN INTENT SHOWN IS SUBJECT TO REVIEW AND APPROVAL OF ALL APPLICABLE LOCAL AND GOVERNMENTAL AUTHORITIES HAVING JURISDICTION. ALL COPYRIGHTS RESERVED © 2019. THE DATA INCLUDED IN THIS STUDY IS CONCEPTUAL IN NATURE AND WILL CONTINUE TO BE MODIFIED THROUGHOUT THE COURSE OF THE PROJECTS DEVELOPMENT WITH THE EVENTUAL INTEGRATION OF STRUCTURAL, MEP AND LIFE SAFETY SYSTEMS. AS THESE ARE FURTHER REFINED, THE NUMBERS WILL BE ADJUSTED ACCORDINGLY.

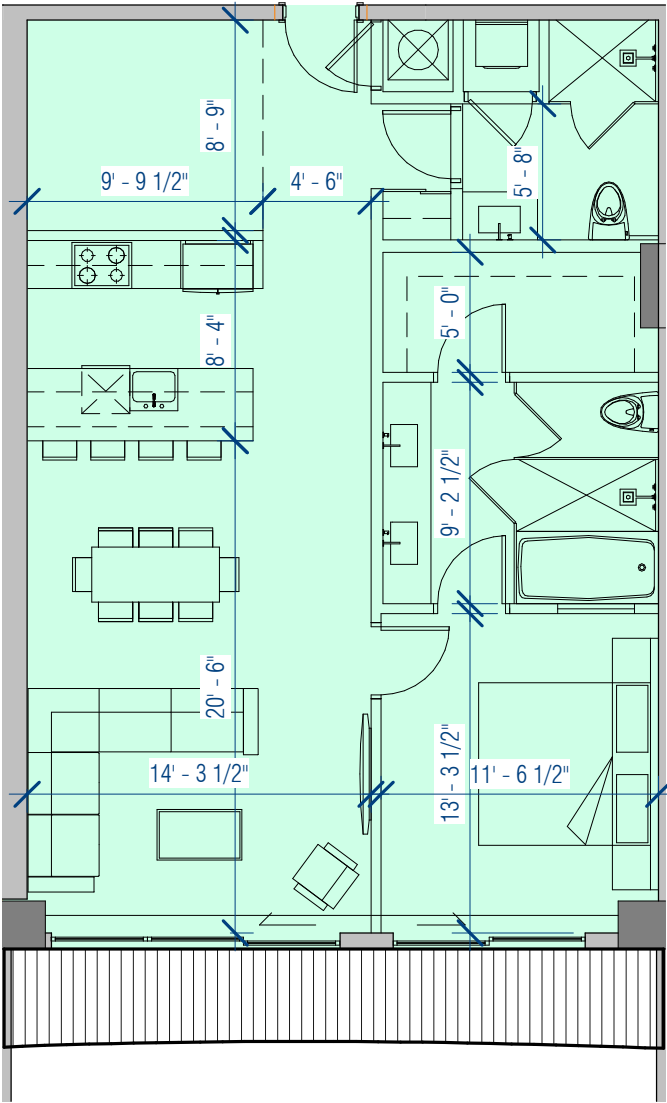
UNIT D - 4 Line

1 Bedroom | Den | 2 Bathrooms

INTERIOR: 1,081 SF

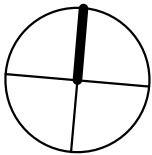
BALCONY: 108 SF

TOTAL: 1,190 SF



ARQUITECTONICA

2900 Oak Avenue Miami, Florida 33133
305.372.1812 TEL 305.372.1175 FAX
www.arquitectonica.com



1 PARK TOWER BY
TURNBERRY

Unit D
SCALE: 1/8" = 1'-0"

DATE:
03/18/22

A-504

ALL DESIGNS INDICATED IN THESE DRAWINGS ARE PROPERTY OF ARQUITECTONICA INTERNATIONAL CORP. NO COPIES, TRANSMISSIONS, REPRODUCTIONS OR ELECTRONIC MANIPULATION OF ANY PORTION OF THESE DRAWINGS IN THE WHOLE OR IN PART ARE TO BE MADE WITHOUT THE EXPRESS WRITTEN AUTHORIZATION OF ARQUITECTONICA INTERNATIONAL CORP. DESIGN INTENT SHOWN IS SUBJECT TO REVIEW AND APPROVAL OF ALL APPLICABLE LOCAL AND GOVERNMENTAL AUTHORITIES HAVING JURISDICTION. ALL COPYRIGHTS RESERVED © 2019. THE DATA INCLUDED IN THIS STUDY IS CONCEPTUAL IN NATURE AND WILL CONTINUE TO BE MODIFIED THROUGHOUT THE COURSE OF THE PROJECTS DEVELOPMENT WITH THE EVENTUAL INTEGRATION OF STRUCTURAL, MEP AND LIFE SAFETY SYSTEMS. AS THESE ARE FURTHER REFINED, THE NUMBERS WILL BE ADJUSTED ACCORDINGLY.

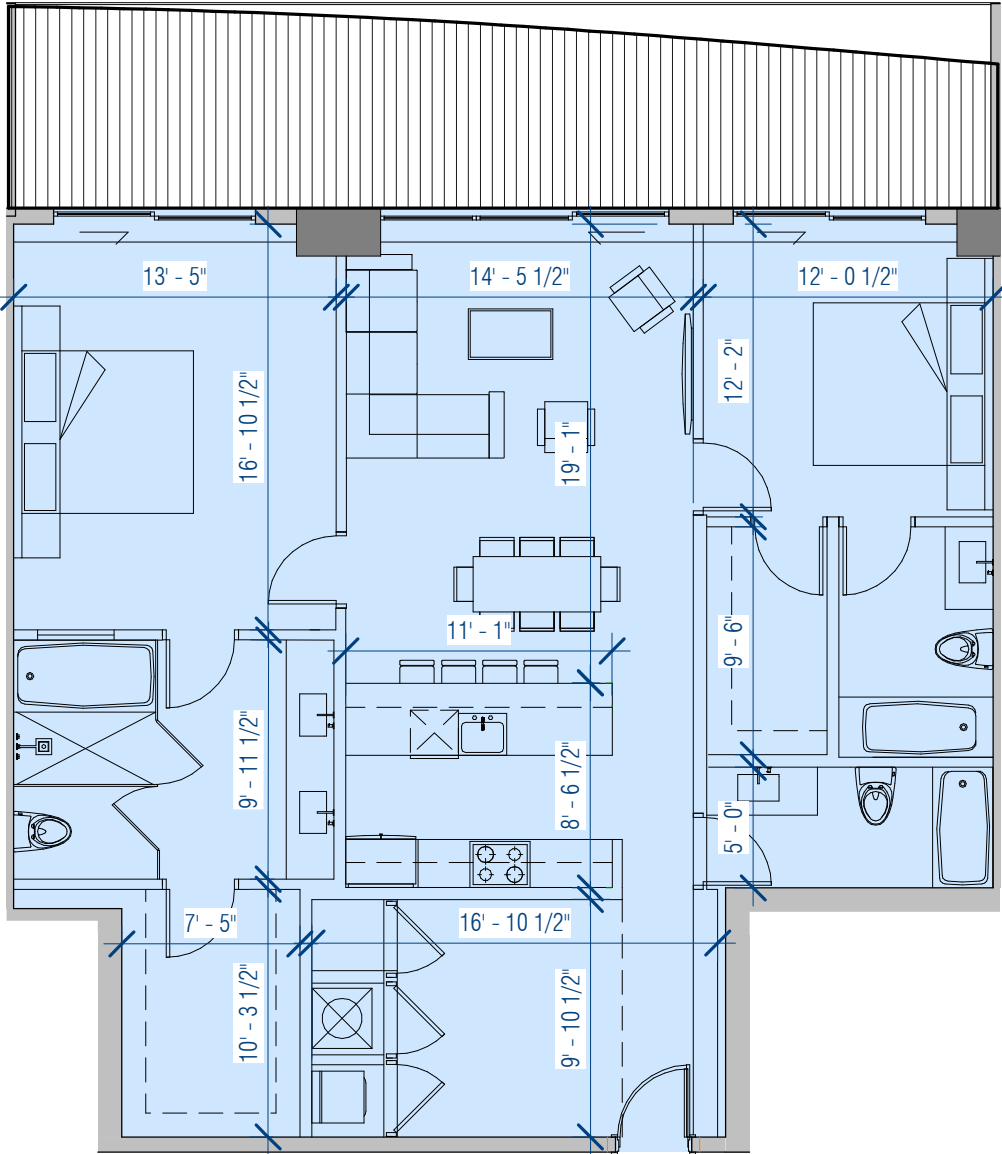
UNIT E - Lines 8 & 9

2 Bedrooms | Den / 3 baths

INTERIOR: 1,480 SF

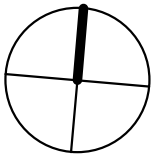
BALCONY: 307 SF

TOTAL: 1,787 SF



ARQUITECTONICA

2900 Oak Avenue Miami, Florida 33133
305.372.1812 TEL 305.372.1175 FAX
www.arquitectonica.com



1 PARK TOWER BY
TURNBERRY

Unit E
SCALE: 1/8" = 1'-0"

DATE:
03/18/22

A-505

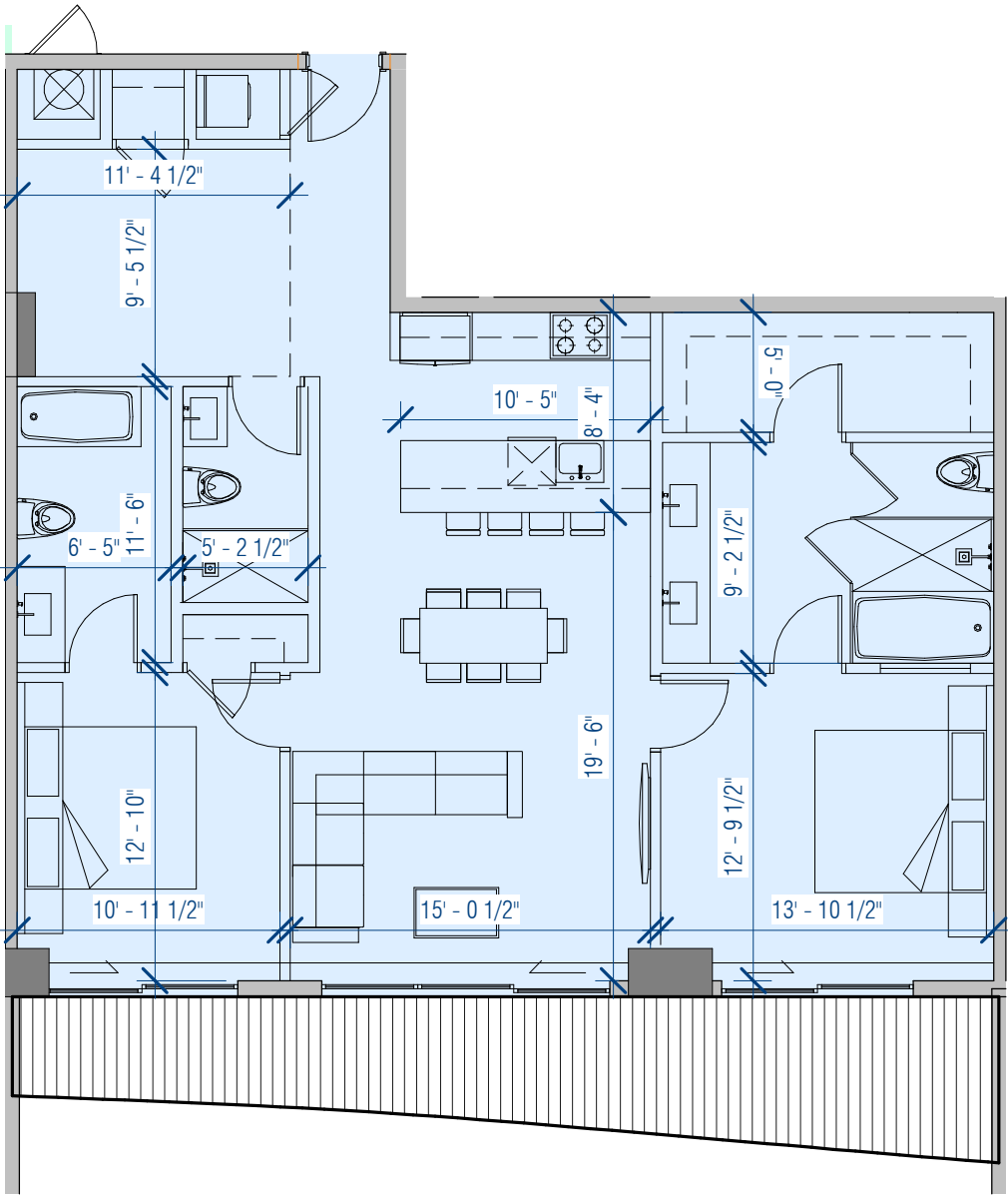
UNIT F - Line 3

2 Bedrooms | Den | 3 Bathrooms

INTERIOR: 1,345 SF

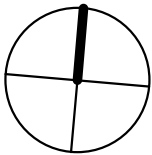
BALCONY: 219 SF

TOTAL: 1,579 SF



ARQUITECTONICA

2900 Oak Avenue Miami, Florida 33133
305.372.1812 TEL 305.372.1175 FAX
www.arquitectonica.com



1 PARK TOWER BY
TURNBERRY

Unit F
SCALE: 1/8" = 1'-0"

DATE:
03/18/22

A-506

ALL DESIGNS INDICATED IN THESE DRAWINGS ARE PROPERTY OF ARQUITECTONICA INTERNATIONAL CORP. NO COPIES, TRANSMISSIONS, REPRODUCTIONS OR ELECTRONIC MANIPULATION OF ANY PORTION OF THESE DRAWINGS IN THE WHOLE OR IN PART ARE TO BE MADE WITHOUT THE EXPRESS OF WRITTEN AUTHORIZATION OF ARQUITECTONICA INTERNATIONAL CORP. DESIGN INTENT SHOWN IS SUBJECT TO REVIEW AND APPROVAL OF ALL APPLICABLE LOCAL AND GOVERNMENTAL AUTHORITIES HAVING JURISDICTION. ALL COPYRIGHTS RESERVED © 2019. THE DATA INCLUDED IN THIS STUDY IS CONCEPTUAL IN NATURE AND WILL CONTINUE TO BE MODIFIED THROUGHOUT THE COURSE OF THE PROJECTS DEVELOPMENT WITH THE EVENTUAL INTEGRATION OF STRUCTURAL, MEP AND LIFE SAFETY SYSTEMS. AS THESE ARE FURTHER REFINED, THE NUMBERS WILL BE ADJUSTED ACCORDINGLY.

UNIT G - Line 2

2 Bedroom | Den | 3 Bathroom

INTERIOR: 1,562 SF

BALCONY: 330 SF

TOTAL: 1,892 SF

